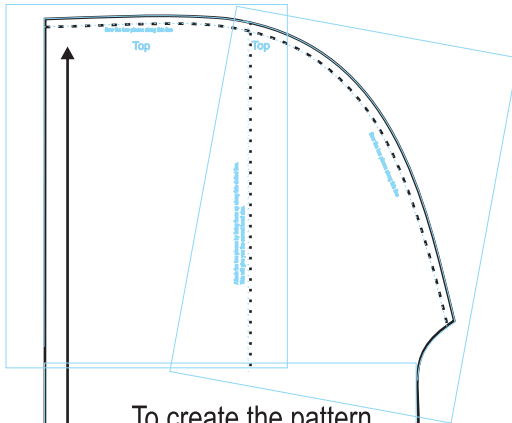


Sew the two pieces along this line

Top



36"

To create the pattern, cut out the two pieces and line them up along dotted lines and tape together. Add an 11" wide rectangle to create a length of 36" (you can tape standard copy paper together until you've reached a total length of 36" from top of pattern to bottom of pattern)

11"

Once Pattern piece is assembled. Cut two from cloth. (Fleece works best, but you can use other relatively low-fray fabrics as well). Sew hood seam and hem around entire half.

You can do a "designer" version by using light velvet fabric and making a second half of satin and sewing the two (right sides together) all the way around, leaving enough of an opening to turn them. Then you have a soft, silky, luxurious lined version.

Attach the two pieces by lining them up along this dotted line.
This will give you the correct hood size.

Top

Sew the two pieces along this line

